

SPACE TO LET.



WORKSHOP



Example photos

FEATURES

- approx. 1,054 sqft / 98 sqm
- 3 Phase Power, compressed air
- Heating and mezzanine floor

BENEFITS

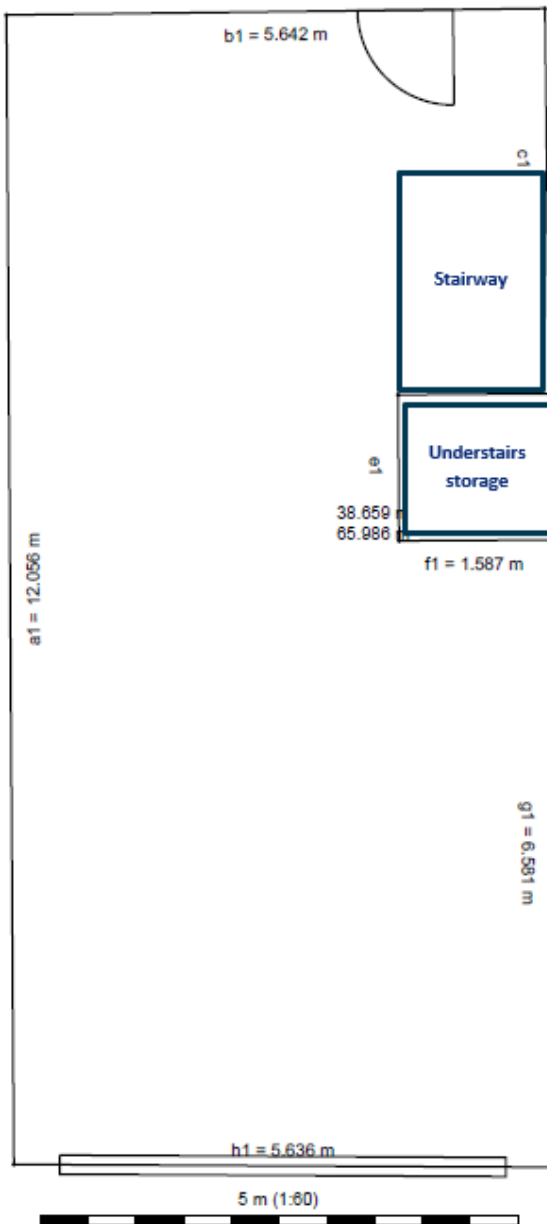
- Access to communal coffee forum, kitchen and toilet facilities
- Free parking onsite
- No additional service charge and internally insuring and repairing leases
- 5 hours of complementary meeting room hire per calendar month

More information is available upon request. Please note, the information provided is for example purposes only. Exact specifications and sizes will vary depending on unit.

FLOOR PLAN.

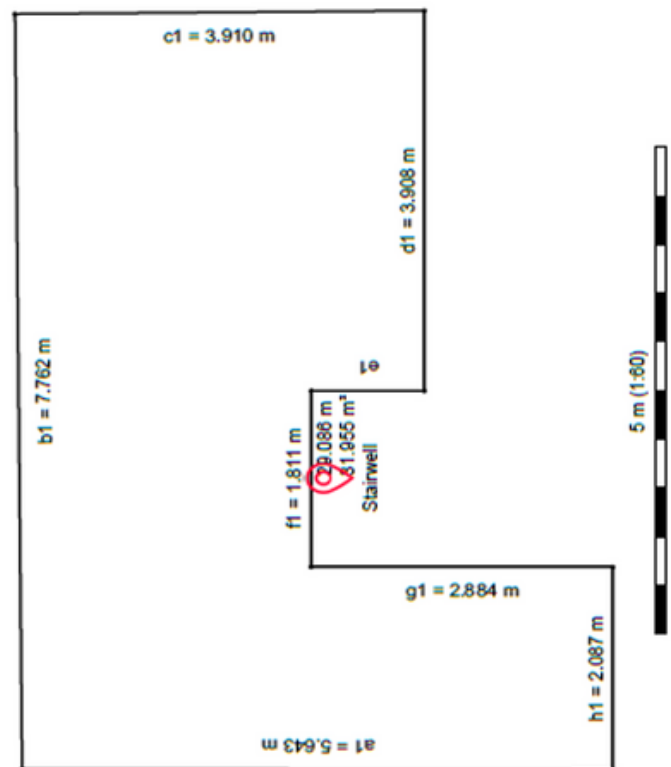
WORKSHOP FLOOR

- 707 sqft



MEZZANINE FLOOR

- 344 sqft



COMMUNITY.

- The centre is home to a community of high-performance engineering and manufacturing businesses
- Business support available through our Innovation Team
- Yearly social events and regular networking events onsite
- On-site Reception services Monday-Friday
- Surrounded by other like-minded engineering and manufacturing businesses onsite



CONTACT.



enquiries@hethelcentre.com



Hethel Engineering Centre,
Chapman Way, Hethel, NR14 8FB



01953 859100



hethelcentre.com



[///signal.observers.sofa](http://signal.observers.sofa)

Enquiry form: <https://nut.sh/ell/forms/338134/OWc5Q4>

